

Merithian Nylon Cable Ties

Material Specifications

Material	Standard Colors	Continuous Max.	Operating Temp. Min.	UL Flame Rating	UV Resistance	Agency Approvals
Nylon 6/6 - General purpose	(Natural) white	185°F 85°C	-40°F -40°C	94V-2	Poor	Mil-M-20693A ASTM-D 4066PA111 UL E64139(N)
Nylon 6/6 - UV stabilized	Black	185°F 85°C	-40°F -40°C	94V-2	Very good	



Shop assortment
part #17500
500 pcs.
4" to 11"

Light Duty

Approx. Length (in.)	Approx. Width (in.)	Max Bundle Diam. (in.)	Tensile Strength (lbs.)	Color	Pcs/Pack Part Number			
					25	100	500	1000
4.0	0.10	5/8	18	Natural	17501	17001		17901
4.0	0.10	5/8	18	Black	17502	17002		17902
8.0	0.10	2.00	18	Natural		17015		17915
8.0	0.10	2.00	18	Black		17016		17916

Standard

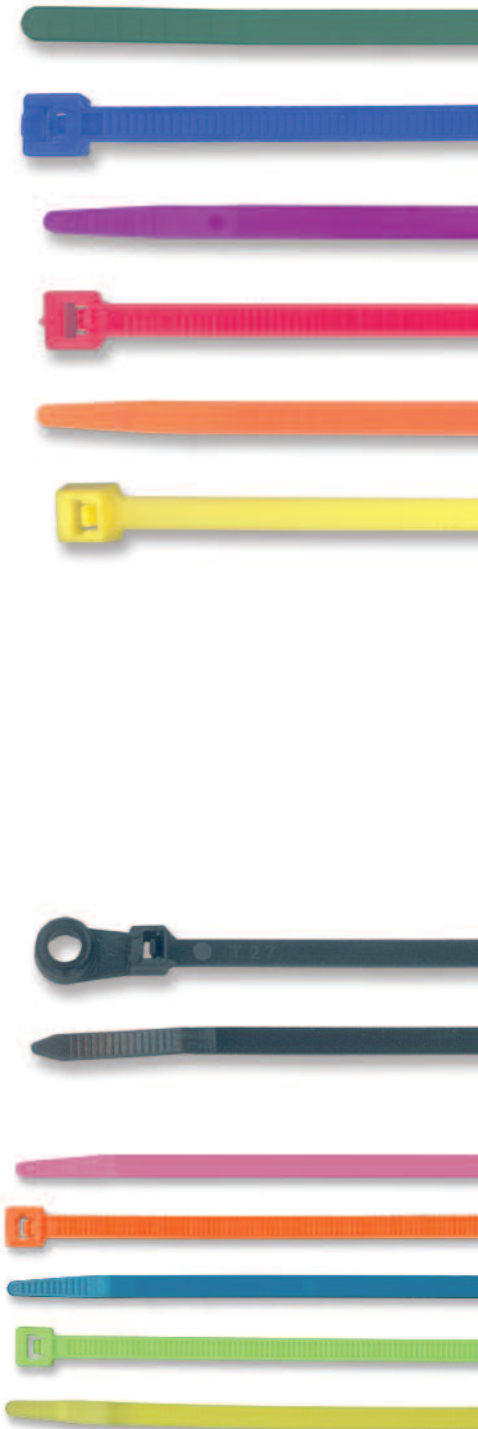
Approx. Length (in.)	Approx. Width (in.)	Max Bundle Diam. (in.)	Tensile Strength (lbs.)	Color	Pcs/Pack Part Number			
					25	100	500	1000
5.5	0.13	1.25	30	Natural	17503	17003		17903
5.5	0.13	1.25	30	Black	17504	17004		17904
7.5	0.18	1.75	50	Brown		17125		17825
7.5	0.18	1.75	50	Grey		17185		17785
7.5	0.18	1.75	50	Natural	17505	17005		17905
7.5	0.18	1.75	50	Black	17506	17006		17906
7.5	0.18	1.75	50	Red		17025		17925
7.5	0.18	1.75	50	Orange		17085		17985
7.5	0.18	1.75	50	Yellow		17045		17945
7.5	0.18	1.75	50	Green		17055		17955
7.5	0.18	1.75	50	Blue		17065		17965
7.5	0.18	1.75	50	Purple		17075		17975
11.2	0.18	1.75	50	Brown		17127		17927
11.2	0.18	1.75	50	Grey		17187		17787
11.2	0.18	3.00	50	Natural	17507	17007	17807	
11.2	0.18	3.00	50	Black	17508	17008	17808	
11.2	0.18	3.00	50	Red		17027	17827	
11.2	0.18	3.00	50	Orange		17087	17887	
11.2	0.18	3.00	50	Yellow		17147	17447	
11.2	0.18	3.00	50	Green		17057	17857	
11.2	0.18	3.00	50	Blue		17067	17867	
11.2	0.18	4.00	50	Purple		17077	17877	
14.0	0.18	4.00	50	Natural	17509	17009	17809	
14.0	0.18	4.00	50	Black	17514	17014	17814	
17.0	0.18	4.50	50	Natural	17550	17050	17850	
17.0	0.18	4.50	50	Black	17560	17060	17860	

Mounting

Approx. Length (in.)	Approx. Width (in.)	Max Bundle Diam. (in.)	Tensile Strength (lbs.)	Color	Pcs/Pack Part Number			
					25	100	500	1000
6.0	0.140	1.25	30	Natural	17543	17043		17943
6.0	0.140	1.25	30	Black	17544	17044		17944
7.5	0.185	1.75	50	Natural	17510	17010		17910
7.5	0.185	1.75	50	Black	17513	17013		17913
11	0.185	3.00	50	Natural		17091	17891	
11	0.185	3.00	100	Black		17191	17991	
14.0	0.187	4.00	50	Natural	17547	17047	17847	
14.0	0.187	4.00	50	Black	17548	17048	17848	
Heavy Duty Mounting								
14.0	0.3	4.00	120	Natural	17231	17031		
14.0	0.3	4.00	120	Black	17232	17032		

Fluorescent

Approx. Length (in.)	Approx. Width (in.)	Max. Bundle Diam. (in.)	Tensile Strength (lbs.)	Color	Pcs/Pack Part Number	
					100	1000
7.50	0.185	1.75	50	Pink	27025	27925
7.50	0.185	1.75	50	Orange	27085	27985
7.50	0.185	1.75	50	Blue	27065	27965
7.50	0.185	1.75	50	Green	27055	27955
7.50	0.185	1.75	50	Yellow	27045	27945



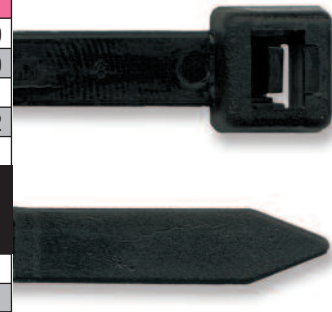
Metal Tooth Cable Ties

Approx. Length (in.)	Tensile Strength (lbs.)	Color	Pcs/Pack Part Number			
			50	100	500	1000
4.0	18	Natural		97001		97901
4.0	18	Black		97002		97902
5.5	40	Natural		97003		97903
5.5	40	Black		97004		97904
7.5	50	Natural		97005		97905
7.5	50	Black		97006		97906
11.0	50	Natural		97007		97907
11.0	50	Black		97008		97908
14.0	50	Natural		97009		97909
14.0	50	Black		97014		97914
14.0	120	Natural	97611		97811	
14.0	120	Black	97612		97812	



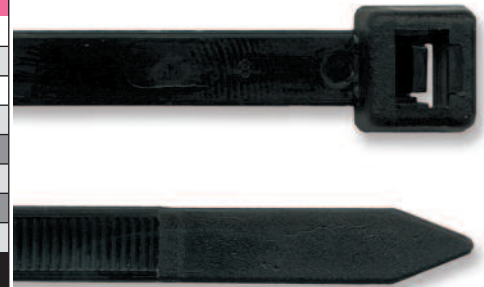
Heavy Duty Ties

Approx. Length (in.)	Approx. Width (in.)	Max. Bundle Diam. (in.)	Tensile Strength (lbs.)	Color	Pcs/Pack Part Number			
					25	50	100	500
8	0.30	2	120	Natural	17219		17019	17819
8	0.30	2	120	Black	17220		17020	17820
14	0.30	4	120	Natural	17211		17011	17811
14	0.30	4	120	Black	17212		17012	17812
18	0.30	5	120	Natural	17131		17331	
18	0.30	5	120	Black	17132	17632	17332	
24	0.30	7	120	Natural	17115	17615		
24	0.30	7	120	Black	17116	17616		
28	0.30	8	120	Natural	17113	17613		
28	0.30	8	120	Black	17114	17614		



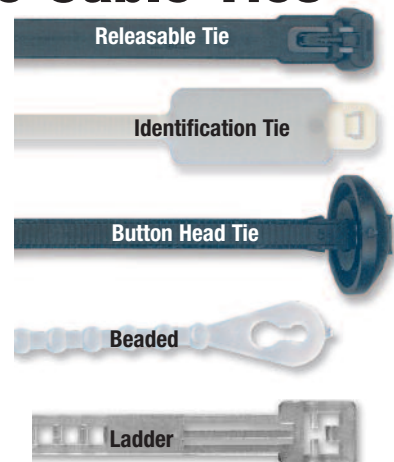
Extra Heavy Duty Ties

Approx. Length (in.)	Approx. Width (in.)	Max Bundle Diam. (in.)	Tensile Strength (lbs.)	Color	Pcs/Pk Part #	
					25	50
24	0.35	7	175	Natural		17617
24	0.35	7	175	Black		17618
36	0.35	11	175	Natural		17621
36	0.35	11	175	Black		17622
41	0.35	12	175	Grey		17623
41	0.35	12	175	Black		17624
48	0.35	15	175	Grey		17649
48	0.35	15	175	Black		17650
20	0.50	5	250	Black	17526	
32	0.50	10	250	Black	17528	
40	0.50	12	250	Black	17530	



Releasable and Other Special Use Cable Ties

Approx. Length (in.)	Approx. Width (in.)	Max Bundle Diam. (in.)	Tensile Strength (lbs.)	Color	Pcs/Pack Part Number	
					100	1000
Releasable						
8.000	0.30	1.250	50	Black	17034	17934
8.000	0.30	1.250	50	Natural	17033	17933
10.000	0.30	3.000	50	Black	17036	17936
10.000	0.30	3.000	50	Natural	17035	17935
Identification						
7.500	0.18	1.750	50	Natural	17039	17939
Button Head						
9.625	0.22	2.625	100	Black	17042	17942
Beaded						
4.200	—	1.140	8	Natural	17080	17980
Cord Band (Ladder Type)						
7.100	—	1.850	—	Natural	17070	17870



Chrome Plated Cable Ties

Modern style of cable ties are perfect for custom shops, bikes and other customized vehicles. Comes in 6 colors.

Length (in.)	Max. Bundle Diameter (in.)	Strength (lbs.)	Color	Pcs/Pk Part #	
				10	100
8	2	40	Blue	57165	57065
8	2	40	Gold	57185	57085
8	2	40	Green	57155	57055
8	2	40	Purple	57175	57075
8	2	40	Red	57125	57025
8	2	40	Silver	57105	57005
4	5/8	18	Silver	58105	58005



Stainless Steel Cable Ties

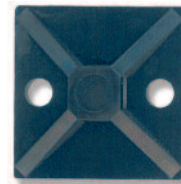
Made with 316 stainless steel. Resistant to temperature and moisture variations. Ideal for high corrosion areas.

Length (in.)	Width (in.)	Strength (lbs.)	Max Bundle Diameter (in.)	Pcs/Pack Part #	
				10	100
8	0.187	150	2	67105	67005
14	0.187	150	4	67109	67009
20	0.187	150	6	67111	67011
27	0.187	150	8	67115	67015
14	0.313	250	4	67119	67019



Cable Tie Mounting Bases

Cable Tie Size (lbs.)	Mounting Screw	Part #		Dimensions (in.)			Std Pack Quantity
		White	Black	W	L	H	
4-way (adhesive-backed)							
18 to 30	#6	27300	28300	0.75	0.75	0.21	100
18 to 50	#6	27400	28400	1.00	1.00	0.22	100
2-way (no adhesive backing)							
18 to 50	#8	37100	38100	0.38	0.6	0.28	100
18 to 120	#10	37300	38300	0.62	0.88	0.39	100



4-way (adhesive backed)



2-way (adhesive backed)

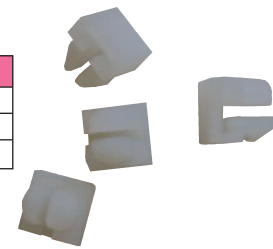


2-way (no adhesive backing)

Push Mount Clips

Push mount clip (natural). Accepts all cable ties up to 50 lbs. tensile strength. For use in 0.250" (6.4 mm) hole. 25 pack.

Part #	Pcs/Pack
66086	25
66186	100
66886	500



Cable Tie Application Tools



LT-400

- Heavy duty tool for use with 18-50 lb. ties
- Automatic cut-off and adjustable tensioning



LT-100

- Lightweight tool for use with 18-50 lb. ties
- Cinch tie to desired bundle and twist tool to remove excess strap



Stainless Steel Tool

#62866

- Steel tie gun for tensioning and cut off. Tool is a ball lock type and ladder type. For use with our stainless steel ties found above

LT600: Cable Tie Tool-Auto-Cut

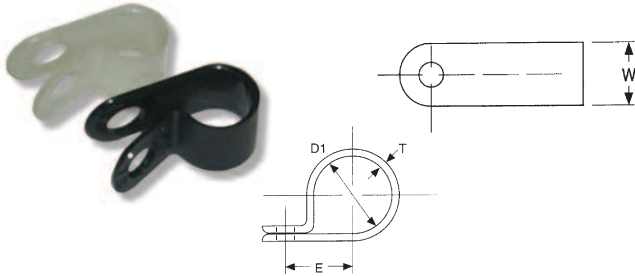


For frequent users and assembly applications, this tool has adjustable tension settings. This tool will automatically cut off the cable tie end at your desired tension with a safe and smooth finish and will remove excess strap flush against the cable tie head. Less operator fatigue. Saves time. Recommended for use with light to standard duty cable ties.

Cable Clamps

Nylon Cable Clamps

Nylon cable clamps resist corrosion road salt, gas, oil and solvents. Available in white or black. Temperature rating is 85°C (185°F).



Part Number		Max. Bundle	Clamp Width	Standard
White	Black	Dia. (D) (in.)	(W) (in.)	Pack Quantity
22002	24002	1/8	3/8	100
22004	24004	1/4	3/8	100
22005	24005	5/16	3/8	100
22006	24006	3/8	3/8	100
22008	24008	1/2	3/8	100
22010	24010	5/8	3/8	100
22515	24515	1	1/2	50
22518	24518	1-1/4	1/2	50
22520	24520	1-1/2	1/2	50

Steel-Plated Neoprene Cable Clamps

Neoprene cushion for electrical insulation and vibration absorption. Neoprene meets specifications MIL R-3065 and AMS-3209. Steel clamps are zinc electroplated for corrosion resistance. 10 per pack.



Part Number	Mounting Hole Diameter (in.)	I.D. Size (in.)	Width (in.)	Pack Qty.
66321	17/64	1/4	9/16	10
66322	17/64	3/8	9/16	10
66332	0.41	1/2	3/4	10
66333	0.41	5/8	3/4	10
66334	0.41	3/4	3/4	10
66335	0.41	7/8	3/4	10
66336	0.41	1	3/4	10

Add '-C' to part number for 100 piece pack

Loom-Type Steel Clamps with Vinyl Cushion

These clamps are ideal for loom, tubing, and wire and contain an oval opening for easy alignment.

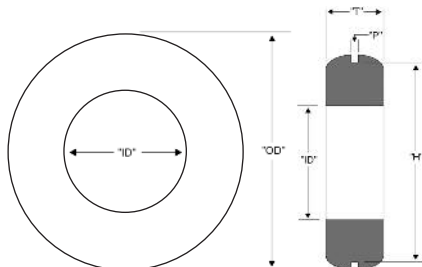


Part Number	Mounting Hole Diameter	I.D. Size (in.)	Width (in.)	Pack Qty.
66087	9/32	1/4	1/2	10
66088	9/32	3/8	1/2	10
66089	9/32	1/2	1/2	10
66090	9/32	5/8	1/2	10
66091	9/32	3/4	1/2	10
66092	9/32	1	1/2	10
66093	9/32	1-1/2	1/2	10

Add '-C' to part number for 100 piece pack.

Grommets

Grommets protect wires and cables passing through panels while resisting oils and grease. They can also withstand temperatures from -40°C to 130°C. Also available: #18500 25 pc assortment.



Part Number	Hole Size (H)	Inside Dia. (ID)	Panel Thickness (P)	Outside Dia. (OD)	Grommet Thickness (T)	Pack Quantity
18301	6.4	4.0	1.6	9.5	6.4	25
18302	6.4	4.0	3.0	9.5	6.3	25
18303	7.9	5.6	2.4	11.1	4.0	25
18305	9.5	7.9	1.6	14.3	7.9	25
18307	12.5	9.5	1.6	17.0	7.0	25
18312	20	16	1.6	24	6.5	25
18314	25.5	22.0	1.6	30.0	8.0	25
18315	31	24.9	1.6	38.0	7.8	25

All dimensions are in millimetres.